



# Baby Blanket

by Isela G. Phelps



A blanket that will become the cherished heirloom in your family. The pattern is simple: panels of stockinette stitch have embossed letters that spell the word BABY. Knit with a super-soft, machine washable yarn. It is big enough to use in the crib or when they grow up in their wee beds.

## Materials

Loom: 68 peg regular gauge knitting loom.  
Sample was knit on Regular Gauge Baby Afghan loom by Décor Accents.

Yarn: 996 yards of Bulky weight yarn.  
Sample was knit using: Debbie Bliss Cashmerino Super Chunky yarn. 3.5oz/100 grams; 87 yards/75meters; 6sks of Pink, 6 sks of Misty Blue color; Fiber content: 55% merino wool, 33% microfiber, 12% cashmere.

Notions: tool, tapestry needle, etc

**Size(s):** 36 x 36 inches

**Gauge:** 15sts and 26rows=4 inches

## Pattern Stitch

Garner Stitch (please see Special instructions on how to treat the first peg of each row—it varies from panel to panel).

R1: k

R2: p



Repeat R1-R2. (Rows 1 and 2 create 1 garter stitch ridge)

**Pattern Notes:**

- Worked as two flat panels, then seamed.
- Pattern is worked in a clockwise direction around loom. Yarn should be at the right side to begin Row 1.
- If pattern calls to knit the stitch, knit it, if pattern calls to purl it, purl it, if pattern calls to slip it, slip it (skip the peg).



## Directions

### } Panel 1

Place markers on pegs: 14, 53. (Note, position of stitch marker on peg 14 will change every 6 rows—follow letter chart to move stitch marker to new position).

**Special instructions:** On odd rows (rows going from right to left), always knit the first peg. On even rows (rows going from left to right), slip the first peg.

With MC yarn: Cast on 68sts

R1-12: Work 12 rows in Garter Stitch (6 garter stitch ridges).

R13: k to the end

R14: sl1, p5, knit to last 3sts, p3

R15-R34: Rep R13 and R14: 10 times (total of 22 rows).

\*Row 35: k to marker, start chart B (should end by 2<sup>nd</sup> marker), k to end.

Row 36: sl1, p5, k to marker, continue with next row of Chart B (should end by marker), knit to last 3sts, p3. \*\*

Repeat from \* to \* until you have completed the 78 rows of Chart B.

Next: Repeat R13-R34.

Next: Work 6 rows of Garter Stitch (3 garter stitch ridges).

#### End of B Square 1

Cut MC and join CC

Next: Work 6 rows of Garter Stitch (3 garter stitch ridges).

Rep instructions from R13 to End of Square 1.

Next: Work 12 rows of Garter Stitch (6 garter stitch ridges).

Bind off with basic bind off method.

#### End of B square 2.

End of Panel 1

### } Panel 2

#### Abbreviations:

K=knit stitch

P=purl

Pink Color yarn: Main Color (MC)

Blue color yarn:

Contrasting Color (CC)

Stop:  
Knit Stitch  
refers to the  
upside purl,  
not the e-  
wrap



**Special instructions:** On even rows (rows going from left to right), always purl the first peg. On odd rows (rows going from right to left), slip the first peg.

Note: position of markers will change every 6 rows—follow letter chart to move stitch marker to new position. Y chart takes place on pegs 17-54, place markers on pegs: 33 and 38 that is the beginning of the Y.).

With CC yarn: Cast on 68sts

R1-12: Work 12 rows in Garter Stitch (6 garter stitch ridges).

R13: k to the end

R14: p3, knit to last 6sts, p6

R15-R34: Rep R13 and R14: 10 times (total of 22 rows).

\*Row 35: k to marker, start chart Y (should end by 2<sup>nd</sup> marker), k to end.

Row 36: p3, k to marker, continue with next row of Chart Y (should end by marker), knit to last 6sts, p6. \*\*

Repeat from \* to \* until you have completed the 78 rows of Chart Y.

Next: Repeat R13-R34.

Next: Work 6 rows of Garter Stitch (3 garter stitch ridges).

### **End of Y square**

Cut CC and join MC

Note: position of markers will change every 6 rows—follow letter chart to move stitch marker to new position. A chart takes place on pegs 15-54, place markers on pegs: 15 & 19 and 50 & 54 that is the beginning of the A legs.).

Next: Work 6 rows of Garter Stitch (3 garter stitch ridges).

R13: sl1, k to the end

R14: p3, knit to last 6sts, p6

R15-R34: Rep R13 and R14: 10 times (total of 22 rows).

\*Row 35: sl1, k to marker, start chart A, k to end.

Row 36: p3, k to marker, continue with next row of Chart A (should end by marker), knit to last 6sts, p6. \*\*

Repeat from \* to \* until you have completed the 78 rows of Chart A.

Next: Work 12 rows of Garter Stitch (6 garter stitch ridges).



Bind off with basic bind off method.

### **End of A square**

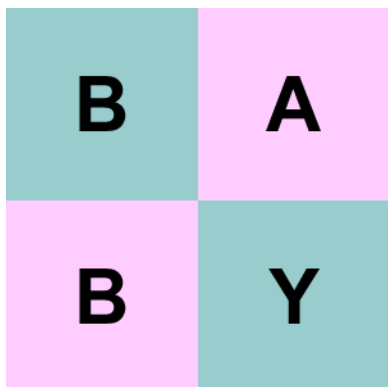
End of panel 2.

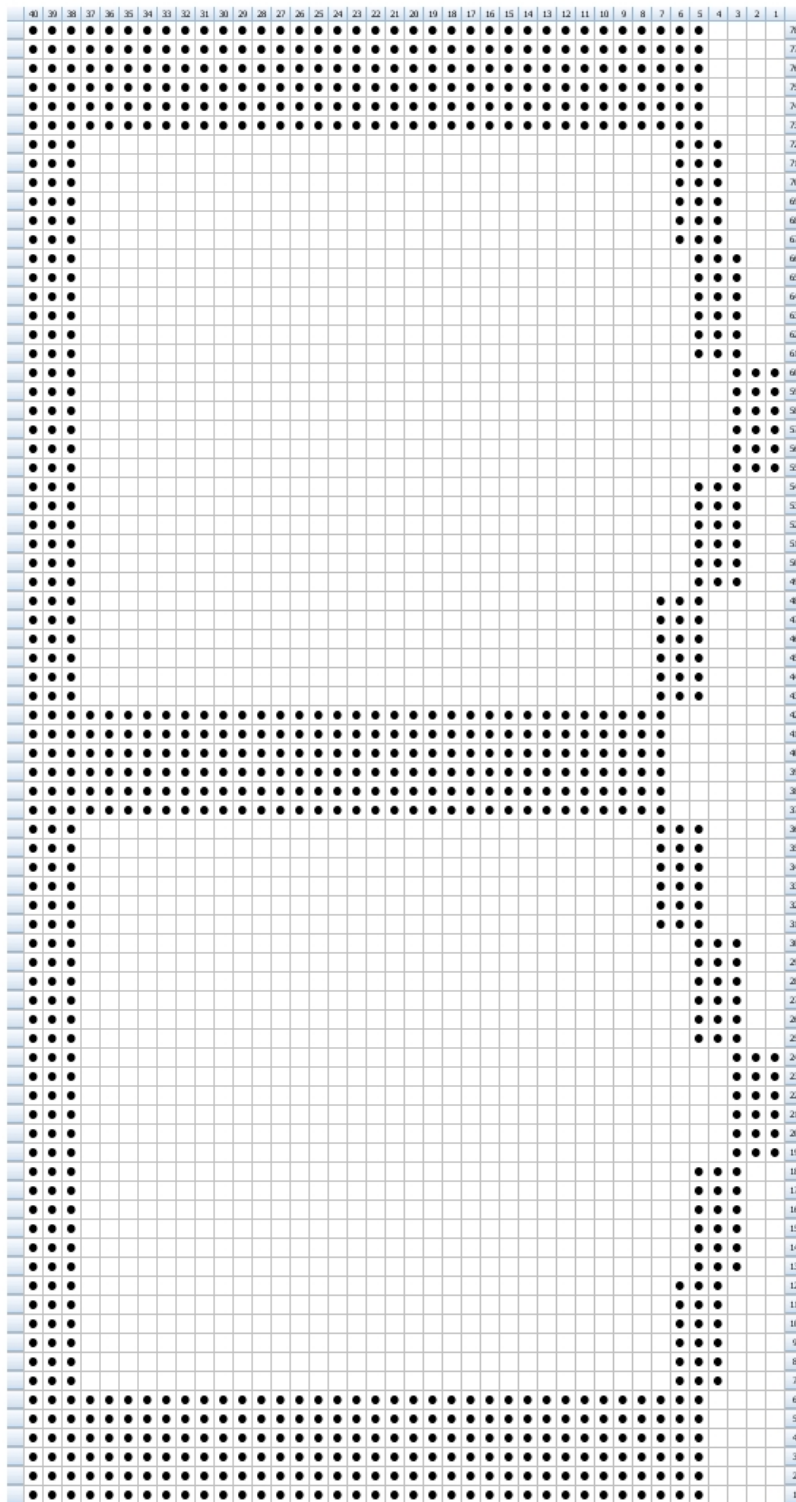
### **} Finishing**

Block lightly.

Assembly:

Using tapestry needle and blue yarn use the garter stitch mattress stitch seaming method to join the two panels as the graphic below.



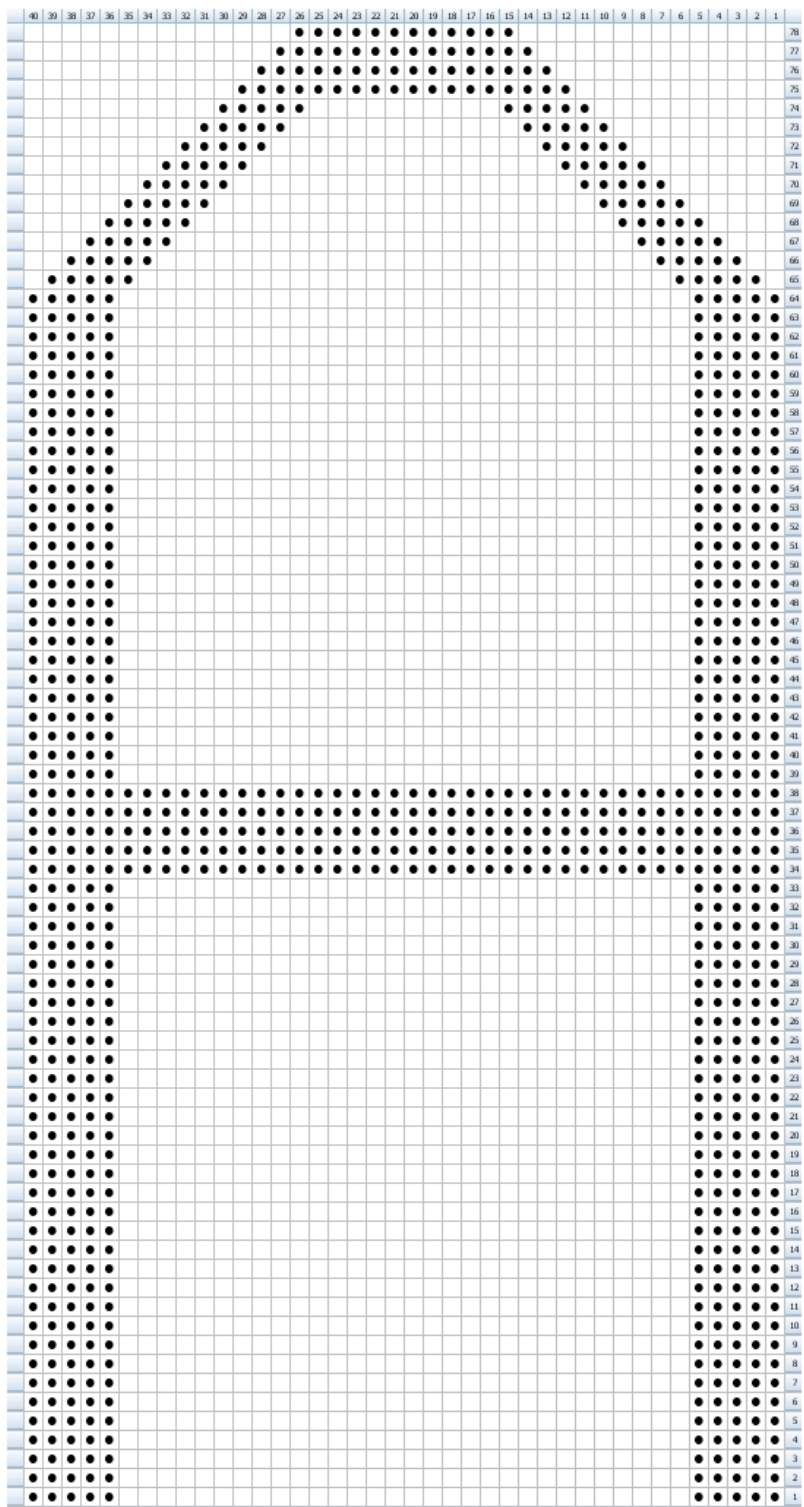


**Legend:**

**knit**  
knit stitch

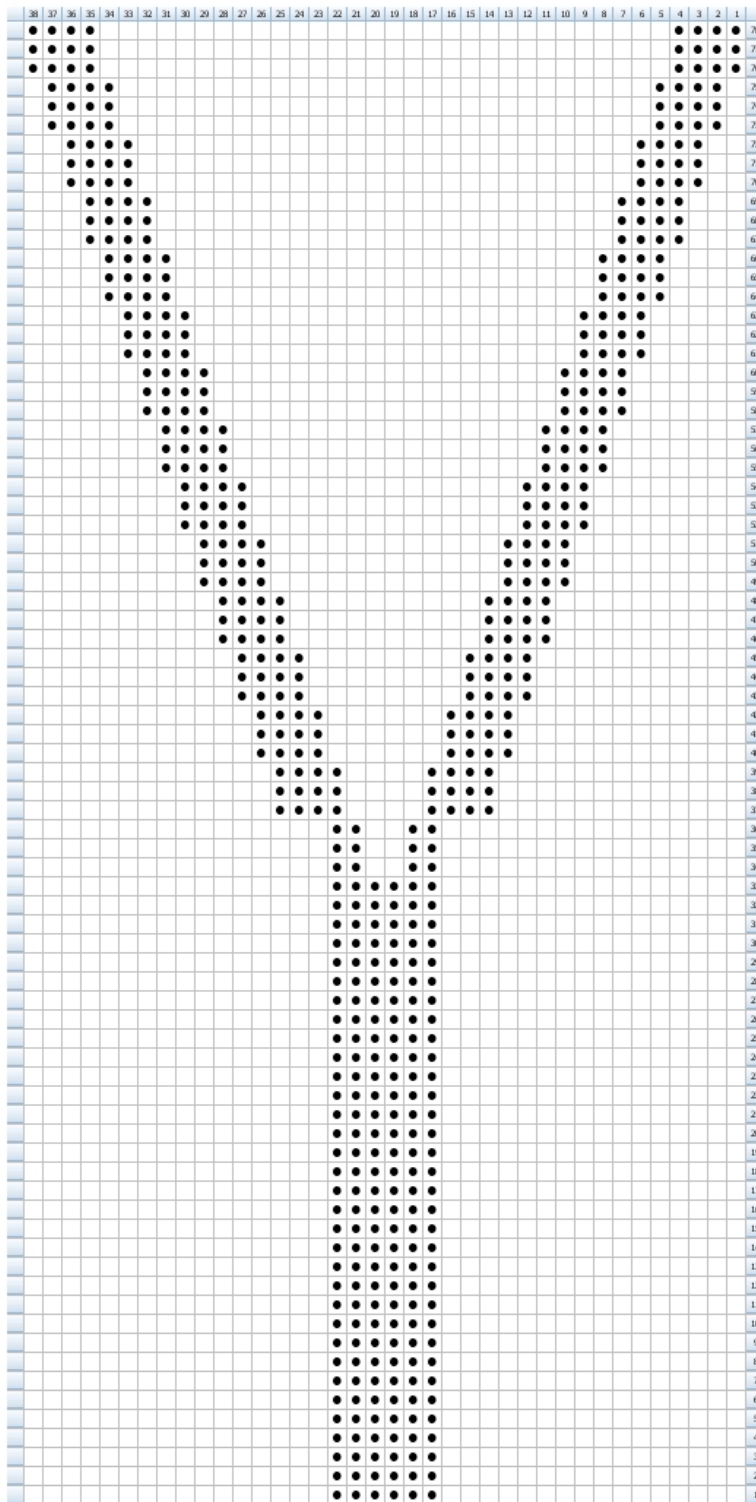
**purl**  
purl stitch

Created in Knit Visualizer ([www.knitfoundry.com](http://www.knitfoundry.com))



**Legend:**  
 **purl**  
purl stitch  
 **knit**  
knit stitch

Created in Knit Visualizer ([www.knitfoundry.com](http://www.knitfoundry.com))



**Legend:**

**knit**  
knit stitch

**purl**  
purl stitch

Created in Knit Visualizer ([www.knitfoundry.com](http://www.knitfoundry.com))